



—

# Suntrust Shanata



# Suntrust Shanata

**Location: Novaliches, Quezon City**

<b>Total Land Area</b>	<b>33,424 sqm.</b>
<b>No. of Clusters</b>	<b>12</b>
<b>No. of Saleable Units</b>	<b>1,544 units</b>

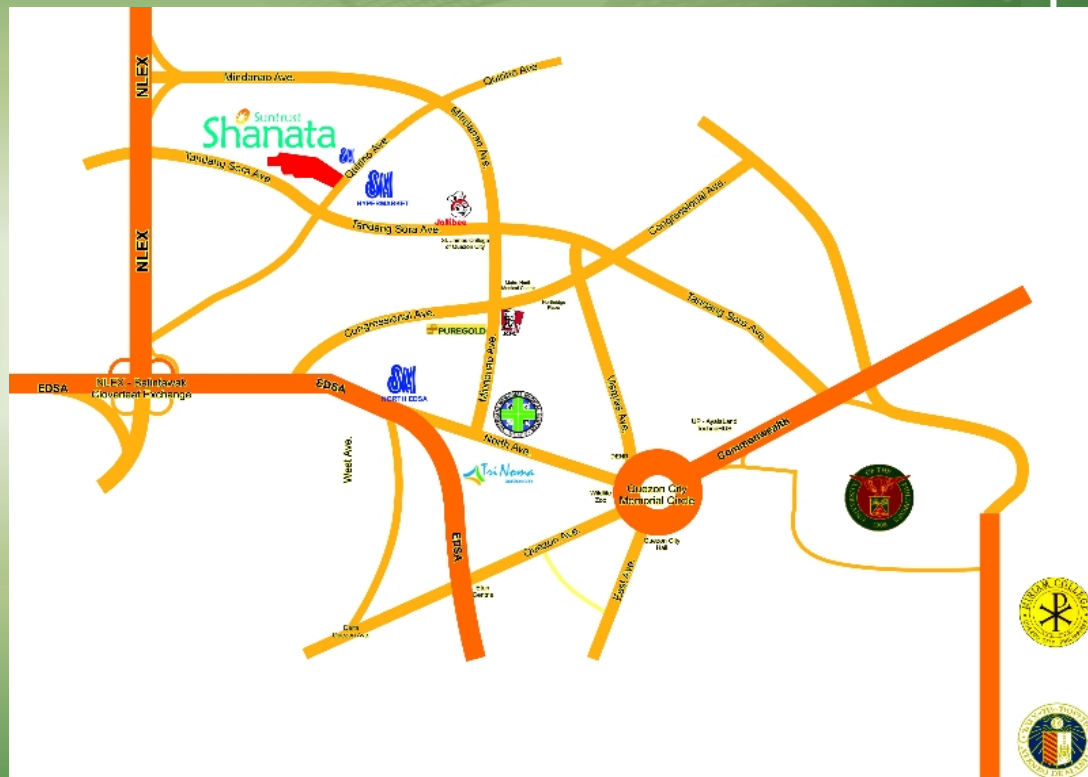
2



**QUEZON CITY SECTOR**

# Suntrust Shanata

LOCATION	APROX. DISTANCE	APPROX. TRAVEL TIME
Sacred Heart Academy	800 m	5 mins
De La Salle – Araneta, Malabon	4.1km	18 mins
UP Diliman	9.4km	30 mins
Veterans Memorial Medical Hospital	5km	22 mins
FEU NRMF Medical	6.7km	29 mins
Hypermarket Novaliches	700 m	3 mins
Trinoma	5.2km	22 mins
SM North Edsa	5km	22 mins



CLUSTER NAME	CLUSTER NO.	# OF STOREY
ALISHA	CLUSTER 1	for future devt
AMARI	CLUSTER 2	for future devt
DANTA	CLUSTER 3	8
DRISNA	CLUSTER 4	6
KENISHA	CLUSTER 5	8
KETANA	CLUSTER 6	6
LAVALI	CLUSTER 8	8
LEORA	CLUSTER 7	12
NILAYA	CLUSTER 10	8
NIRAN	CLUSTER 9	12
SALMA	CLUSTER 11	10
SERENA	CLUSTER 12	10



# 2015 Philippine Property Awards

## Suntrust SHANATA

- Best Affordable Condo Development (Metro Manila) – Highly Commended



# Site Development Plan



**NOVALICHES PROPERTY  
SITE DEVELOPMENT PLAN**

# AMENITIES



# ACTUAL PHOTOS



Swimming Pools and Basketball Court

9



Nigh Shots of Pools and Club House

# PROJECT PRICING & PAYMENT TERMS

# *Unit Pricing*

Reservation	Min. of P15,000
FLOOR AREA	26.70 – 54.20 SQM.
PRICE /SQM.	<b>P77,986 – 139,676/SQM</b>
TCP	Min. of P 2,110,868.53M

# *Parking*

Levels : Surface and Lower Ground

Units : 373 slots  
(including 33 street parking slots)

CP	700,000.00
VAT	84,000.00
Misc. Fees	42,000.00
TCP	<b>826,000.00</b>

# STANDARD PAYMENT TERM

CLUSTER 3 CLUSTER 5	25% of TCP payable in 24 months
CLUSTER 4 CLUSTER 6	10% of TCP payable in 12 months
CLUSTER 7	30% of TCP payable in 30 months
CLUSTER 8	25% of TCP payable in 24 months
CLUSTER 9	25% of TCP payable in 24 months
CLUSTER 10 CLUSTER 12	30% of TCP payable in 30 months
CLUSTER 11	10% of TCP payable in 12 months

13

REMAINING BALANCE

Payable thru In-house & Bank Financing

# ACTUAL SITE PHOTOS



# On-going Construction - Cluster 8

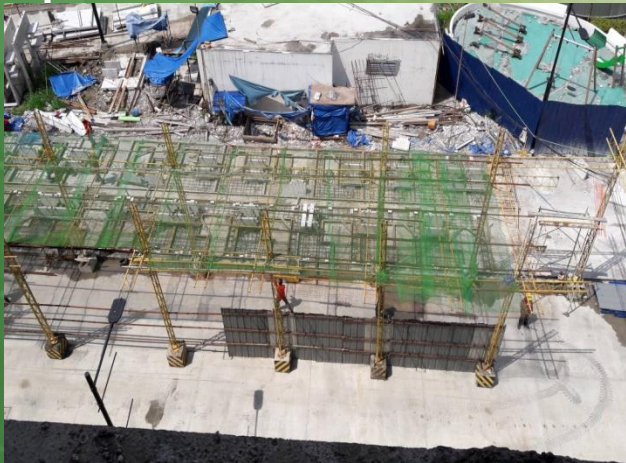
(as of February 16, 2018)



# On-going Construction - Cluster 8

(as of February 16, 2018)

- \* Installed Safety Overhead Protection & on-going installation of safety board up (fence) for Temporary access to Cluster 11
- \* Shotcreting of Interior walls @ 7th flr. level
- \* Preparation for shotcrete interior walls @ 8th flr. level



# On-going Construction Cluster 9



18  
(as of February 16, 2018)

# Sales Office & Showroom

